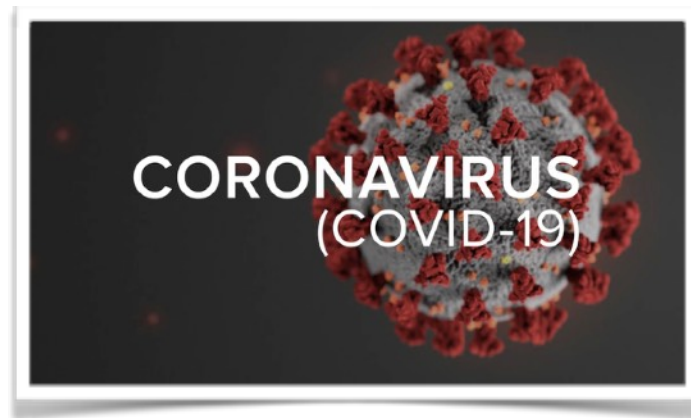


NEWS AT FIRST

First Presbyterian Church, 211 W 1st St, Monticello, IA 52310



Coronavirus (COVID-19)

During this time of uncertainty, know that First Presbyterian Church is doing what they can to stop the spread and promote health so we can get past this event.

Because events, news and life changes each hour, we are trying to keep you as up-to-date as possible. If you haven't already, follow our Facebook page (@MonticelloFPC) for the most current information related to the church and events. This is the best way for us to communicate updates to you as quick as possible. If you have questions or concerns, you can contact the office at 319-465-3393 (calls are forwarded) during office hours, or Pastor Emory at 319-481-7572.

1

SOCIAL DISTANCE

Remain out of congregate settings, avoid mass gatherings and maintain distance (6 feet) when possible.

2

WASH YOUR HANDS

Wash your hands often with soap and water for at least 20 seconds.

3

COVER

Cover your cough or sneeze with a tissue, then throw the tissue in the trash.

4

DON'T TOUCH

Avoid touching your eyes, nose and mouth.

Creative Shift

Our Bible is full of creative shifts - when someone is going about their life, then here comes a flood, a drought, the voice of God, and suddenly they are completely re-constructing their entire life. No more ordinary life. No more routines. No more fixed, daily goals. Now, it's up in the air. In fact, we could easily say that the whole Bible is a story of ONE GIANT CREATIVE SHIFT.

With the corona virus pandemic, we are experiencing this kind of shift right now, when we must re-think how to live our lives. Just recently, our Rebecca Circle was informed that we could not take communion to Pennington Square, because it was being quarantined. So we decided to be creative. We took a photograph of ourselves, decorated cards and laminated them into large placemats to say, "You are in our hearts." We are delivering them to our sisters and brothers across town.

We are learning of sports events cancelled, seasons postponed indefinitely, theater productions halted, family trips crossed-off. Many of us are experiencing stop signs placed in front of us, and yes, we are saying, "Of course. It makes sense to be safe. It makes sense to be careful." This is how we talk about our physical bodies. We must keep our skin away from the germs. We must isolate ourselves, protect ourselves from potential harm.

But we are also deeply spiritual selves. We are deeply connected to other human beings, and we need contact with one another. We need a loving touch. We need to hear a warm laugh when we tell a little joke. We enjoy eating with others, cheering with others and even shedding a tear with others.



**Pastor Emory
Gillespie**

319-481-7572
emorygillespie@
yahoo.com



**Office Administrator,
Mackenzie Kahler**

319-465-3393
office@
fpcmonticello.org



Worship

Sundays 10:00 a.m.

**POSTPONED until
further notice**

**Join us virtually on
Facebook to hear
Pastor Emory's
video sermon**

This is an easy thing to forget in such times as this, when our survivalist self kicks in and we lock our doors. We can forget that our spiritual selves, our inner souls need nourishment, too. Sure, it's not the end of the world to be alone. Jesus set out to be alone many times. He wandered into the desert. He walked by the docks. He slipped through the crowd and 'went to a lonely place.' But he always came back. He even returned from the tomb of complete isolation. Why? To be with us, to be with other people.

So as we are asking ourselves, "How can I stay healthy?" I invited you to consider the health of your soul, too. I invite us all to open our hearts to our whole community - church, town and world - and ask, "How can I help us to stay connected with each other? How can I help all of us to feel the support of sisters and brothers in Christ? How, in this time when we are separated from one another, how, can we express our togetherness?" It takes creative thinking.

Christ reached out to the lepers and touched them, reached out to Samaritans and hugged them, reached out to women, children, youth, outcasts, and ordinary guys to say, "I know you feel cut off from others, but I am welcoming you in." So, too, let us continue to live our lives with Christ's spirit shining bright around us. It's a creative shift from the way of the world, but even in this time of protection, let's think of new ways to say, "God's love is surely with us all."

Blessings,
Pastor Emory

THOUGHTS AND PRAYERS

During this time of social distancing, we are thinking and praying for our brothers and sisters who are homebound and in facilities that are not allowing visitors at this time to keep everyone safe and healthy. We're thinking of you!

Pat Anderson	Jane Corbin	Betty Lambert
Lorie Schmidt	Ronald Behrends	Laura Eiben
Marie Hein	Barb Null	Betty Wolken
Naomi Bender	Lorraine Haag	Mary Jane Steiner





The following events have been postponed until further notice. Follow our Facebook page for updates when events resume. If you have any questions, please contact the church office at 319-465-3393.

TiLT Meetings (Tuesdays, 6:00 p.m.)

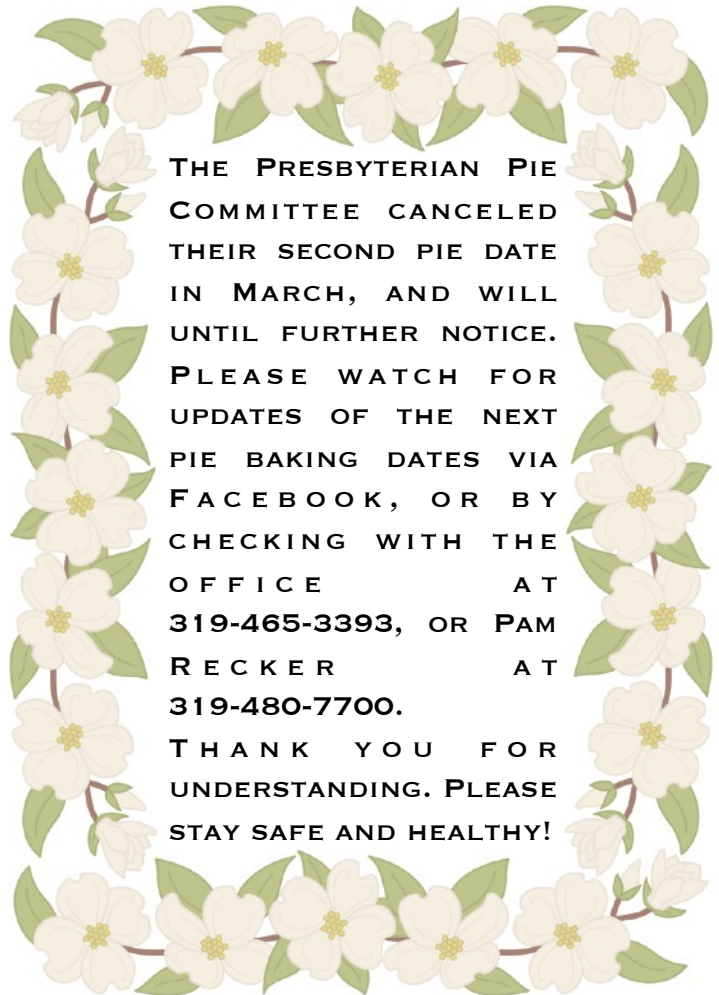
Pie Committee (alternating Mondays)

Rebecca Circle (Monthly)

Food at First (Monthly)

Worship/Sunday School/Fellowship
(each Sunday)

In-Person Committee Meetings



Scholarship applications are due in physical hard-copy form **WEDNESDAY, APRIL 1st!** No fooling (since they are due on April Fool's Day)! Applications can be mailed to the church at: 211 W 1st St, Monticello, IA 52310.

We are so fortunate to be able to provide a number of options to our students looking to better their future.



Naomi Bender will be 95 on Monday, April 13. Let's shower her with cards at:

502 Pinehaven Dr #106, Monticello, IA 52310

CAMP & CONFERENCE SOUP SUPPER

A big THANK YOU to everyone who worked, donated, or contributed in anyway to the Camp & Conference Soup Supper. Proceeds go towards sending our church youth to Camp Wyoming.

-Christian Ed. Committee



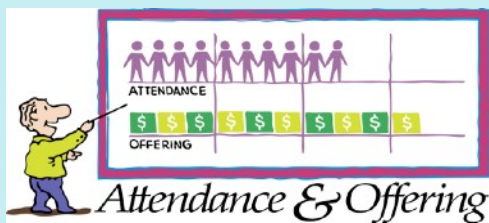


ATTENTION COLLEGE STUDENTS:

A NOTE FROM CAMP WYOMING: WE STILL HAVE CAMP COUNSELOR POSITIONS OPEN FOR THIS SUMMER, AND AS COLLEGE CAMPUSES SHUT DOWN, WE THOUGHT IT WOULD BE BENEFICIAL TO REACH OUT TO YOU AND ASK THAT YOU LOOK INWARD TO THE PEOPLE WITHIN YOUR CONGREGATIONS WHO JUST MIGHT BE THE PERFECT FIT TO WORK AT CAMP THIS SUMMER.

If you would like to learn more about camp counselor summer positions, please visit:

<https://campwyoming.net/summer-camp/staff/apply-for-summer-staff/>



CONTRIBUTIONS

FEB 2 \$2,289.00

FEB 9 \$829.00

FEB 16 \$1,092.62

FEB 23 \$1,652.00

DONATION \$715.00

TOTAL \$6,577.62

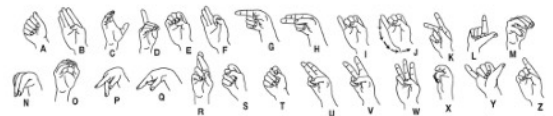
EXPENSES \$14,359.92

ATTENDANCE	WORSHIP	SS
MARCH 1	49	4
MARCH 8	48	10
MARCH 15	NOT RECORDED	
MARCH 22	CANCELED	

Make sure to attend worship virtually on our Facebook page (@MonticelloFPC) and continue your offering as you're able through one of the many options provided on page 7.

Puzzle!

Hands play a key role in the biblical accounts of Jesus' crucifixion and resurrection. Use this sign-language alphabet to retell what happened.



Jesus' _____ were
to the tree. Two criminals were also crucified,

one on the _____
and the other on the _____ of Jesus. Jesus
cried out with a loud voice, "_____,"

into your _____ I commit my spirit."

(Luke 23:46) Jesus' friends _____
him from the cross to the tomb. Jesus showed

his _____ to prove
he was Christ. Bring your _____ together

in _____, and thank God for his
Son, Jesus!

Answer: hands, nailed, right, hand, left, Father, hands, prayer



We are offering the following opportunities to help with getting the congregations offerings into the church offering plate even though we are not conducting “in person” church services on Sundays. These offering suggestions can continue throughout the year if you choose.

1. Send your checks directly to the church office at: 211 W 1st St, Monticello, IA 52310.
2. Fill out a form (included on the back of this page) to direct deposit your money from your checking/savings accounts to our bank account. This would need to be a set amount either monthly or bi-weekly.
3. Contact me or the church office and we can supply you with our account number and bank routing number so you can transfer your offering from your bank account to the church’s bank account much the same way as you pay your bills online. This could be done weekly or monthly with you controlling how much and when you send your offering to the church.

Please contact myself or the church office with information as to which offering choice best suits your situation.

Thank you for your input and your continued support of our church’s financial needs.

Danny C Saunders, Treasurer
132 Highview Ave
Monticello. IA. 52310

319-480-2298
danjan1949@gmail.com

Food Pantry Update: 🍏🍏🍞🍗🥞

*The Monticello Food Pantry will remain open Mondays (5 p.m.-7 p.m.) and Fridays (2 p.m.-4 p.m.). **They will discontinue their Wednesday hours until further notice.**

*They will only be serving one person at a time to encourage distance. Please be patient with any extended wait times and respect this distancing.

*If you are able, consider donating to those in need. You can donate products, or consider a monetary donation. DID YOU KNOW?: When the Food Pantry receives monetary donations, they use this for needs not filled by HACAP, and those purchases are made locally (Fareway) and are bought by the case at a discounted case pricing, so they are actually able to purchase more for the money you donate. Thank you!

*If you have a donation (product or monetary), those can be brought to the Food Pantry during normal operating hours (Mondays from 5 pm-7 pm, Wednesdays from 10 am-12 noon, and Fridays from 2 pm-4pm). Monetary donations can be left with the check-in volunteer located in the church. For product donations, please knock on the Food Pantry door and our volunteers would be glad to help you drop off. We will be serving people during this time, so we appreciate your patience.

Here are Food Pantry current needs should you like to pick up an extra item or two, or more, the next time you head to the store: **bleach, dishwashing soap, canned fruit, jelly/jam, cake mixes, jello, canned chicken, ketchup, mayo.**

Thank you for your help making sure our community is taken care of. Stay safe!

Authorization Agreement for Direct Payments
(ACH Debits)

Company: Citizens State Bank

ABA Number: 0739-21190

I (we) hereby authorize Citizens State Bank, hereinafter called Company, to initiate debit entries to my (our) (☒) checking (☐) savings account indicated below at the depository financial institution named below. Hereinafter called Depository, and to debit the same to such account. I (we) acknowledge that the origination of ACH transactions to my (our) account must comply with the provisions of U.S. law.

You agree and authorize us to debit your account _____ for a one time set up fee plus Sales Tax. **State Sales Tax applies only when the ACH service is set up on a checking account. Sales Tax does not apply to a savings account.**

Depository Name: _____

City: _____ St: _____ Zip: _____

Routing #: _____ Account #: _____ Amount: \$ _____

Frequency: _____ Citizens State Bank Account: _____

Effective Date: _____ Expiration Date: _____

This authorization is to remain in full force and affect until Company has received written notification from me (or either of us) of its termination in such time and in such manner as to afford Company and Depository a reasonable opportunity to act on it.

Name(s): _____

The undersigned acknowledge(s) receipt of and agree(s) to the terms of the following disclosures:

- 1. Electronic Funds Transfers, Your Rights and Responsibilities**
- 2. Common Features, Limits and Fees**

Signed: _____

Please Attach Voided check or Deposit Ticket



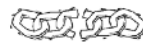
PUZZLE

Picturing the Lord's Supper

Jesus ate the Passover meal with his disciples as a symbol of the new covenant.



Directions: Use the picture clues to fill in key words from Luke 22:19-20, NIV.



And he took _____, gave _____ and _____ it, and gave



it to them, saying, "This is my _____ given for you; do this in



_____ of me." In the same way, after the supper he



took the cup, saying, "This _____ is the new _____ in my



blood, which is _____ out for you."

LUKE 22:19-20, NIV

Answer: bread, thanks, broke, body, remembrance, cup, covenant, poured